

# Wadhams to Avoca Trail History

The Port Huron and Northwestern Railroad Company opened the narrow gauge railroad from Port Huron to East Saginaw in 1882. In 1889, the railroad was sold to the Pere Marquette Railroad and the tracks were changed to standard gauge. The St. Clair County Parks and Recreation Commission purchased the right of way from the CSX Railroad in 1999.



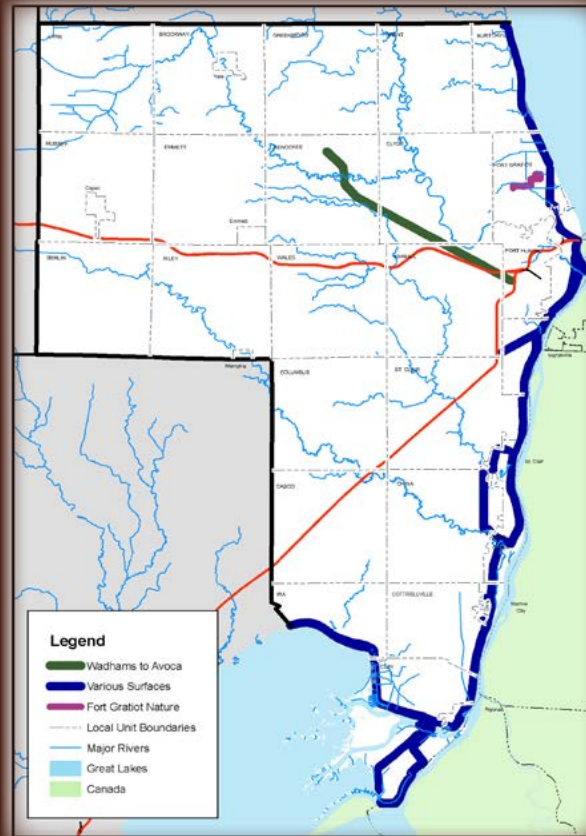
Above: A postcard from around 1900 shows a passenger train crossing the Mill Creek Trestle.



Above: An undated postcard shows the Avoca Depot, looking northwest. The Avoca grain elevator, which still stands today, can be seen in the background.

## Trail System Information

The St. Clair County Parks and Recreation Commission is also working with shoreline communities to develop the 54-mile Bridge to Bay Trail. For more information on St. Clair County's trail system visit [www.stclaircountytrails.org](http://www.stclaircountytrails.org)



## County Parks Info

St. Clair County has opportunities for all your recreational needs. Along with the trail system, St. Clair County has eight beautiful parks for you to enjoy; The Blue Water River Walk County Park, Columbus County Park, Fort Gratiot County Park, Fort Gratiot Light Station, Goodells County Park, Marine City Dredge Cut, Woodsong County Park, and the New North Channel County Park. For more information about County Parks, or for a large print version of this brochure, please call (810) 989-6960.

## St. Clair County Parks and Recreation Commission



8254 County Park Drive  
 Goodells, MI 48074  
 (810) 989-6960  
[www.stclaircountyparks.org](http://www.stclaircountyparks.org)  
[www.stclaircountytrails.org](http://www.stclaircountytrails.org)



## Trail Funding

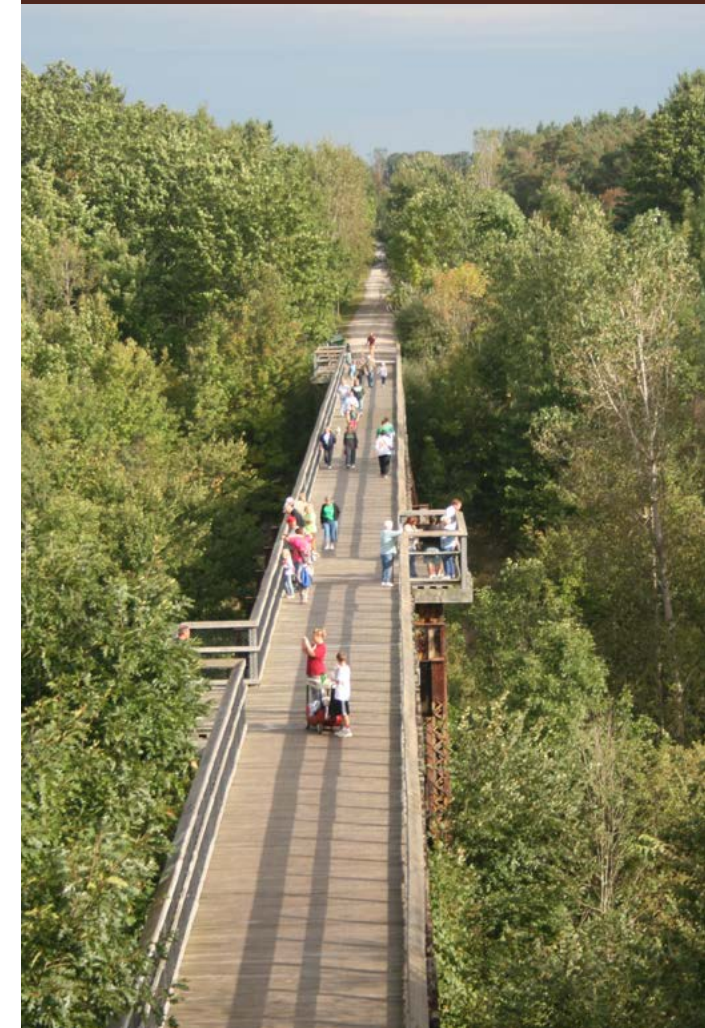
Funding for construction of the Wadhams to Avoca Trail comes from the St. Clair County Parks and Recreation Commission millage and grants. Grant funds for the trail have been provided by the United States Government through the Transportation Equity Act for the Twenty-first Century (TEA-21) program administered by the Michigan Department of Transportation (MDOT); the Michigan Natural Resources Trust Fund administered by the Michigan Department of Natural Resources (MDNR); and the GreenWays Initiative program administered by the Community Foundation of Southeastern Michigan.



Printed 2024 8016-0227

# Wadhams to Avoca Trail

St. Clair County, Michigan



Follow the Path of  
 St. Clair County History!  
[www.wadhamstoavocatrail.org](http://www.wadhamstoavocatrail.org)

# When you visit the trail.....

The Wadhams to Avoca Trail is a non-motorized trail open year round.

The trail is ten feet wide and over 12 miles in length. Over five miles of the trail are paved, starting at Griswold Road and ending at McLain Road. The remainder of the trail (7.0 miles), between Avoca Road and McLain Road is surfaced with limestone fines.

A Hybrid Pedestrian Signal, also known as a HAWK (high-intensity activated crosswalk) is in use at the Wadhams Road crossing. Trail users should use extreme caution when crossing Wadhams Road.

Mileage markers and road crossing signs are installed along the trail's entire length. Markers designate each 1/4 mile from the middle of the Mill Creek Trestle.

The 640-ft. Mill Creek Trestle is the showpiece of the Wadhams to Avoca Trail. Built in the late 1800s, the 60-ft. high trestle has been decked and railed to provide safe access for trail users. Four overlooks provide spectacular views perfect for photo opportunities. The trestle is located between Beard Road and Imlay City Road.

Horses are not allowed on the trestle. A by-pass horse trail is located just to the east of the trestle.

Slower traffic should keep to the right of the trail; faster users pass on the left. Before passing other trail users, provide adequate warning and reduce speed.

For safety, bottled water and cell phones should be carried at all times. Don't litter, carry out what you carry on to the trail.

Please respect adjacent private property.

Hunting and firearms are not allowed on the trail.

A bicycle repair station is located at the Lapeer Road trailhead. The station includes an air pump, various tools and a bike clamp to aid in minor repairs.

Parking lots and vault toilets are provided at the Lapeer Road, Imlay City Road and Avoca Road trailheads. Additional parking is available at the Wadhams Road trailhead provided by the By-Lo gas station. We ask trail users not to park at the road crossings.

*Share the trail - cyclists yield to all other trail users, and walkers yield to equestrians.*

*State law and local ordinances require owners to keep their pets on a leash while on the trail. Please clean up after your pet.*

